

# Innovative Design and Performance

The combination of Ingersoll Rand's industry-leading expertise and innovation delivers **exceptional levels of reliability and performance** in our new centrifugal air compressors.

## A High-Reliability Coolers

Transverse-mounted water-in-tube coolers can be thoroughly cleaned in place from either side. The coolers are oversized for greater fouling resistance and provide low CTD and pressure drop to increase compressor efficiency and reliability.

## B Easy Access to Components

Optimised for superior serviceability, our unique vertically-split design provides fast access to major components to minimise downtime.

## C Informative and Intuitive Controller

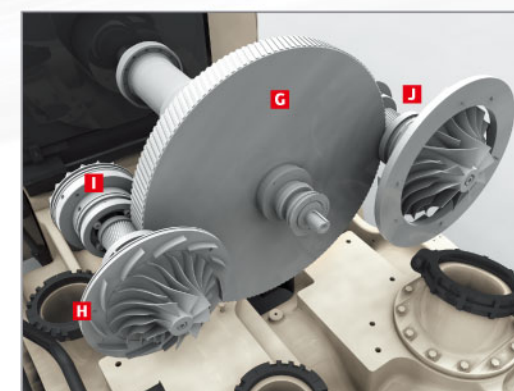
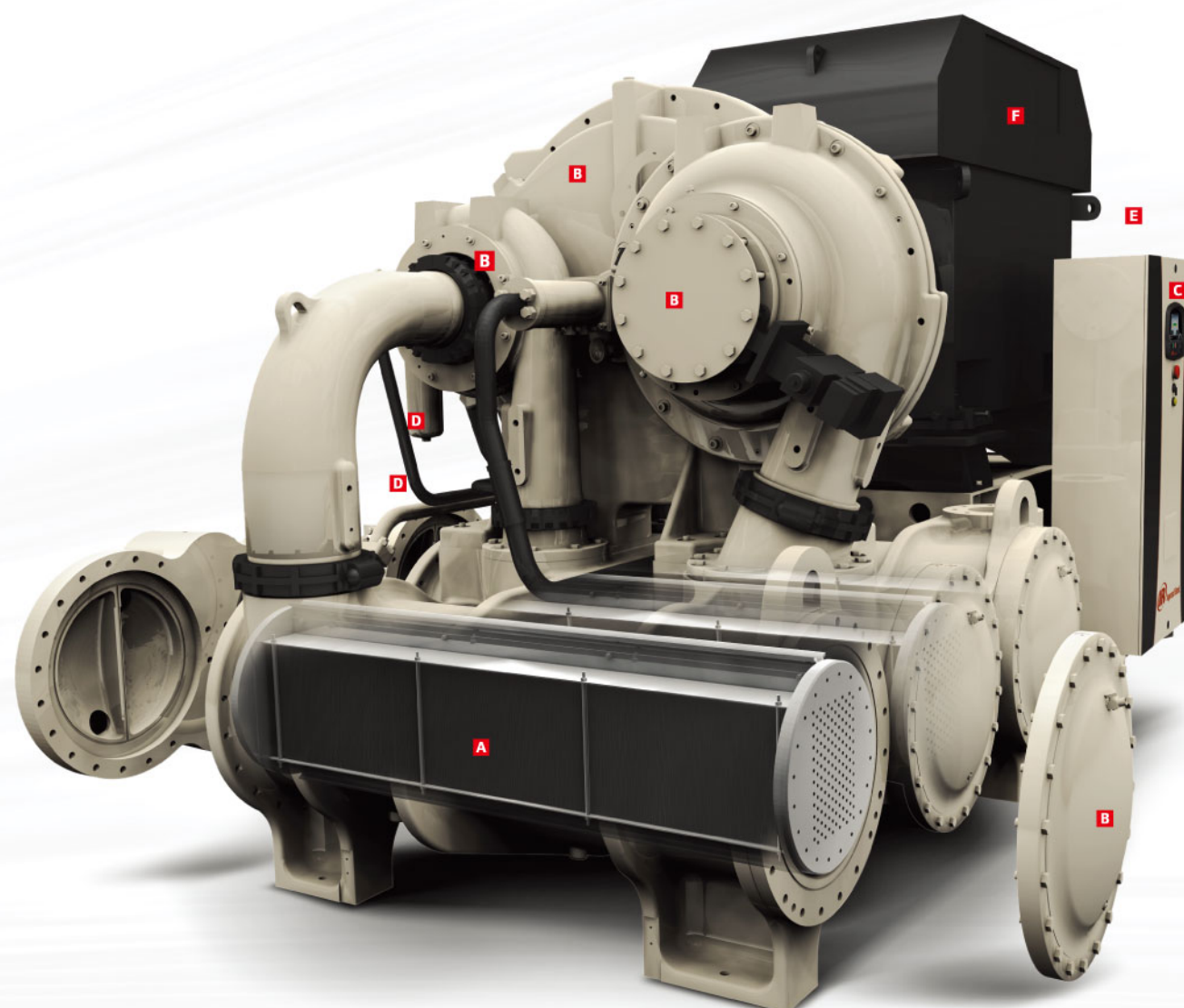
The high-resolution colour display provides a powerful window into all vital signs of the compressor by continuously monitoring and trending critical parameters. Remote access to the compressor is available from virtually anywhere.

## D Simplified, Leak-Free Oil System

The system features an integrated oil filter in addition to pressure and thermal regulation. Leak-free operation is achieved using O-ring face seals.

## E Low Noise Operation

Personal comfort is enhanced with quiet operation. A low sound enclosure is available for further noise reduction.



## F Heavy Duty, High-Efficiency Motor

The motor features sleeve bearings that reduce maintenance and improve durability.

## G Long-Life Gears

High-quality AGMA-rated gearing is designed for 25 year life. All components are uniform hardened vs. surface hardened to further increase reliability.

## H Efficient Impeller Design

The backward leaning impellers designed with leading edge software maximise efficiency and turndown. Field removal is simple and requires no special tools.

## I High Capacity Bearings

Flex pad lobe bearings offer the highest load capability and low vibration. Tapered land thrust bearings absorb maximum load and are more tolerant to contaminants.

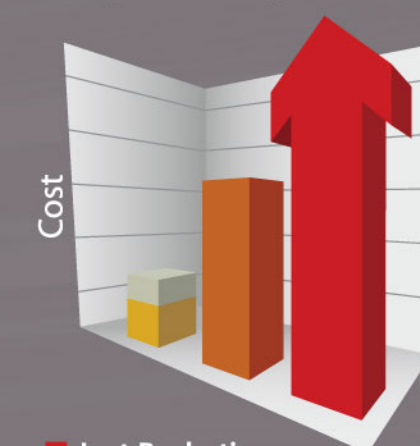
## J Minimised Air Loss

Full floating non-contact carbon ring seals minimise air leakage and prevent oil from migrating into the air. Single piece construction provides 2-3 times better performance vs. other technologies, saving valuable compressed air.

## Reliability Saves You Money

Capital and maintenance costs account for only a small portion of a compressor's life-cycle cost. While energy also represents a significant cost component, the single largest contributor to life-cycle cost is loss of production. Unplanned production interruptions are best prevented by using reliable equipment — so the return on investment on an Ingersoll Rand centrifugal compressor will be more than worth it over the life of your air system.

## Life-Cycle Cost Analysis



### Lost Production

- No unscheduled plant shutdowns because of air compressors

### Energy

- Reduce wasted kW

### Capital & Traditional Maintenance

- Lower maintenance costs
- Fixed cost of ownership



# Intelligent Compressor Control...The Key to System Productivity

Ingersoll Rand controllers help maximise productivity by improving variables that impact cost and output, including performance, maintenance and energy consumption.

## A Controller Like No other

The controller features an intuitive high-resolution colour display that provides a window into all vital signs of the compressor. In addition to ensuring peak performance, the controller enables predictive maintenance through continuous monitoring and trending of critical parameters. Enhancing productivity and ease of use, the controller has an open Web page architecture allowing users to remotely interact with the compressor from almost anywhere.

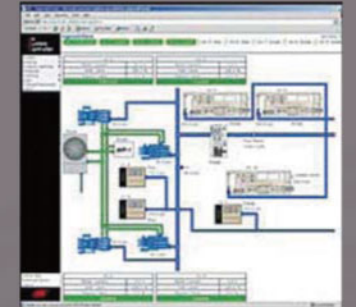


## Web-Enabled Simplicity

- Event logging and graphical trending
- Scheduled compressor data log generator
- No special software required
- Available in 26 languages



## Air System Controller (ASC)



The ASC provides a window into the compressor room by making raw data available to plant operators and managers in formats that are easy to understand, whilst yielding substantial energy savings. The ASC uses human machine interface (HMI) software specifically designed by Ingersoll Rand for compressed air systems.

### Functions include:

- Total system control over compressors, dryers, cooling towers, pumps and accessories
- Energy management
- Pressure- and load-sharing
- System benchmarking and data management
- Enhanced communications

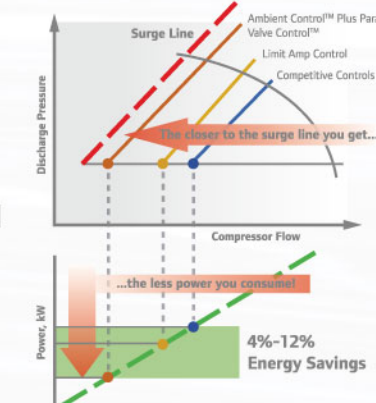
## Flexibility and Convenience

- Multiple connection options
- Modular input/output capability
- Easy LAN connection



## Optimise Your Operation

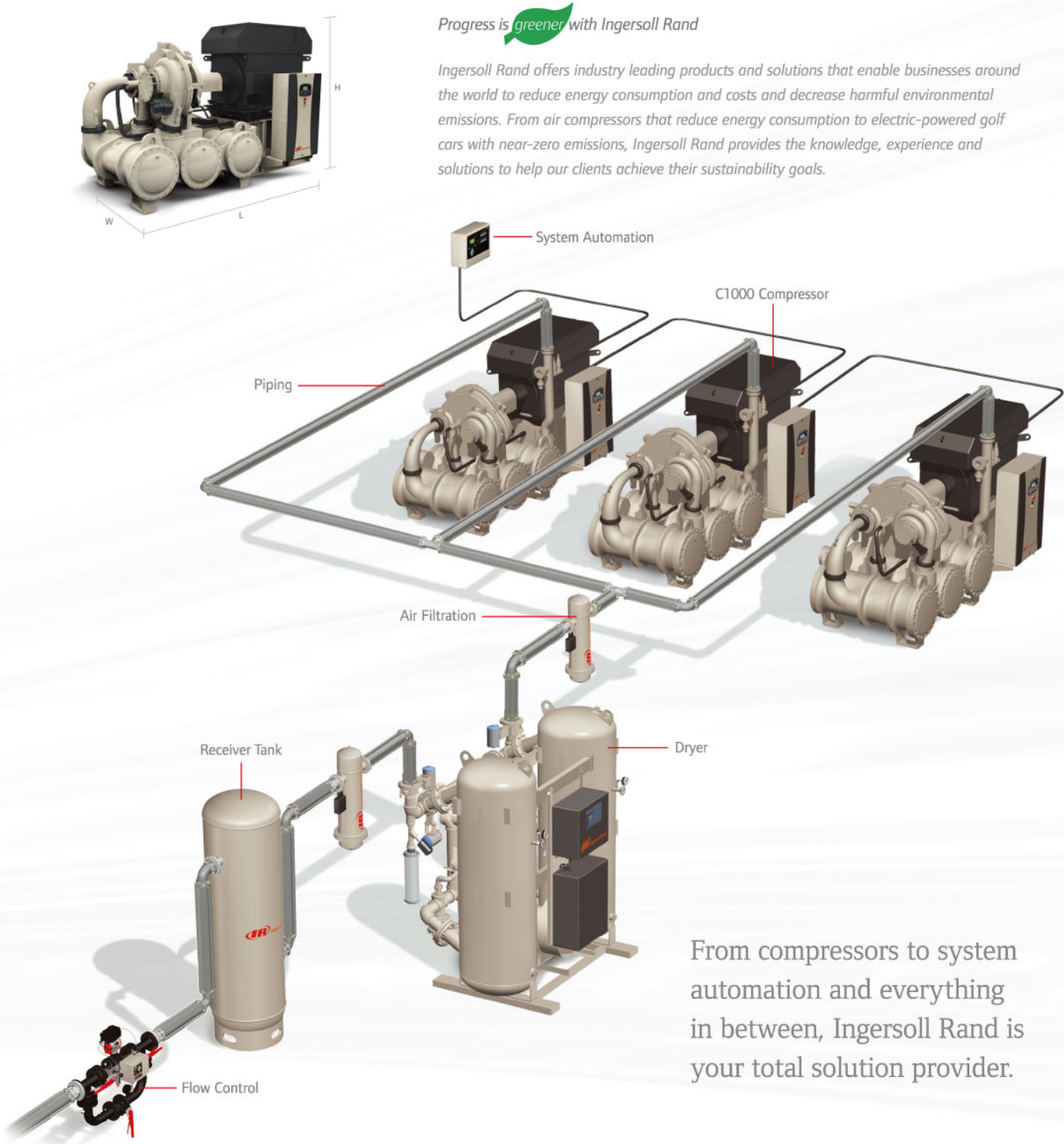
- Optimised turndown
- Simplified ambient control
- Advanced surge control
- Comprehensive machine health and safety monitoring





# A Configuration For Every Need

C1000 Performance														
Model	Nominal Capacity		Pressure Range		Nominal Driver Power		Length		Dimensions Width		Height		Estimated Weight	
	m³/min	cfm	barg	psig	kW	hp	mm	in	mm	in	mm	in	kg	lb
3-Stage Units	127-212	4,500-7,500	5.9-10.3	85-150	700-1,100	900-1,500	4,300	170	2,200	90	2,700	110	18,182	40,000
2-Stage Units	127-212	4,500-7,500	3.4-4.5	50-60	700-1,100	500-800	4,300	170	2,200	90	2,700	110	18,182	40,000



Progress is greener with Ingersoll Rand

Ingersoll Rand offers industry leading products and solutions that enable businesses around the world to reduce energy consumption and costs and decrease harmful environmental emissions. From air compressors that reduce energy consumption to electric-powered golf cars with near-zero emissions, Ingersoll Rand provides the knowledge, experience and solutions to help our clients achieve their sustainability goals.

From compressors to system automation and everything in between, Ingersoll Rand is your total solution provider.

# Global Reach, Local Service

No matter what the industry or location, Ingersoll Rand is committed to serving you 24 hours a day, seven days a week. Our worldwide network of distributors, engineers and certified, factory-trained technicians are a phone call away — ready to support you with innovative and cost-effective service solutions that will keep you running at peak performance.

