

# TRACKED MOBILE JAW CRUSHER



WeChat Official Account of NFLG

**福建南方路面机械股份有限公司**  
FUJIAN SOUTH HIGHWAY MACHINERY CO., LTD.

No.700, Tiyu Street, High-Tech Industry Zone,  
Fengze District, Quanzhou, Fujian P.R.C 362021  
TEL: +86-595-2290 5555  
FAX: +86-595-2290 1888  
E-mail: sales@nflg.com  
Official website: <https://en.nflg.com>

Facebook: chinanflg  
Linkedin: nflg



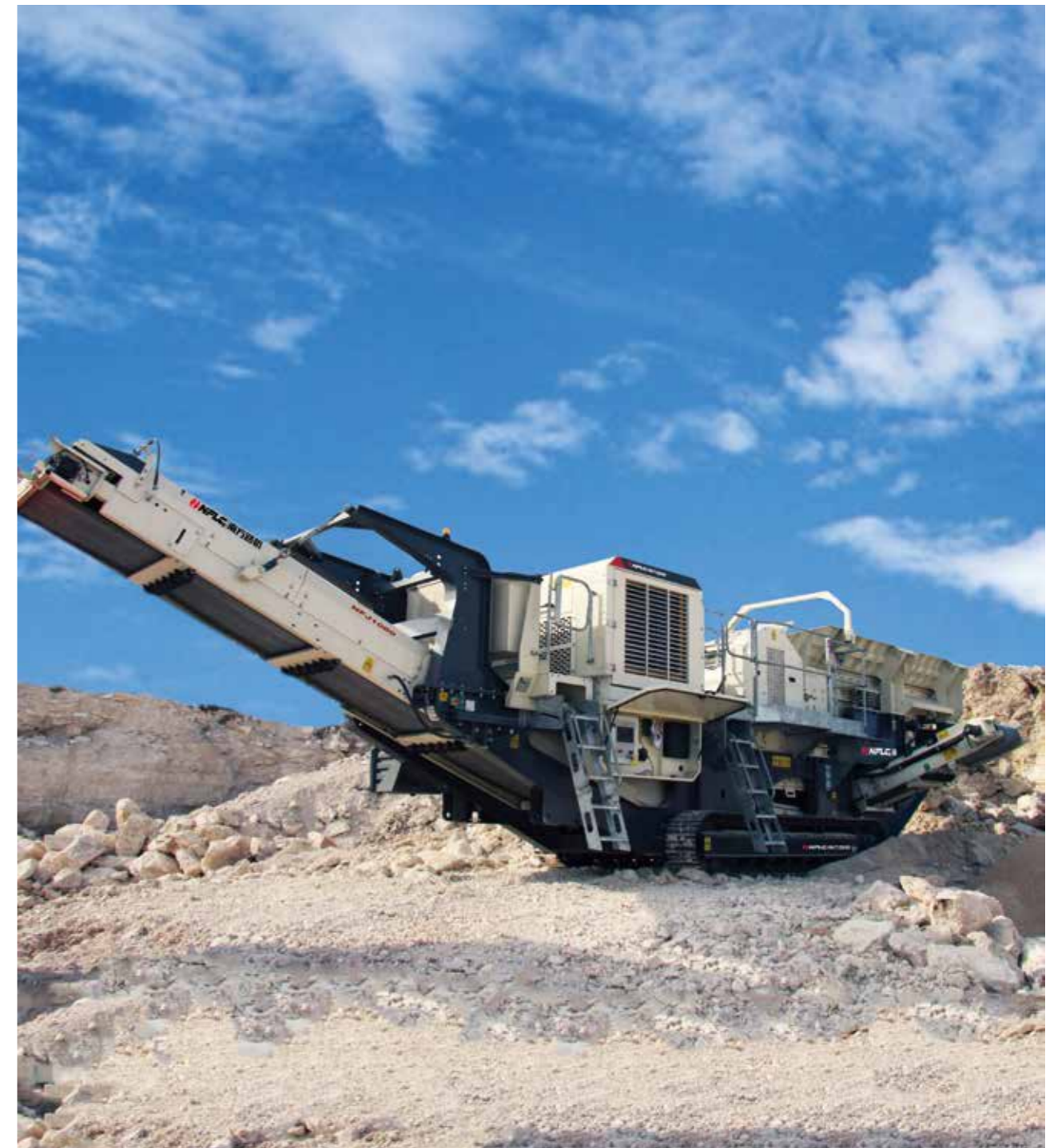
All rights reserved by NFLG; no advance notice will be given in case of any change.

Supplied & Serviced By :



**PT. FAJAR MAS MURNI**  
Jl. Raya Narogong No. 214 Bekasi, West Java – Indonesia  
Phone : (62-21) 8203989, 8203990 ext. 651  
Email : [marketing@fajarmasmurni.com](mailto:marketing@fajarmasmurni.com)

Visit Us At  
[www.fajarmasmurni.com](http://www.fajarmasmurni.com)



# TRACKED MOBILE JAW CRUSHER



# Features



## 1 Receiving hopper

- ①. Side plate of hydraulic foldable receiving hopper
- ②. High wear-proof steel plate

## 2 Feeder with grid

- ①. The feedstocks will be fed to the crusher through controlling the feeder with variable speed
- ②. Double-layer vibrating feeder that can effectively screen out the fine materials and impurities
- ③. The top layer is the heavy vibration grid, and the bottom layer is the mesh screen or rubber plate
- ④. The feedstocks below the screen can be selected to transfer to the main or side belt conveyor through material splitting hopper
- ⑤. Improve the broken feedstock effect to reduce the blocking and overflow
- ⑥. The mesh is easily replaced

## 3 Crusher

- ①. Strong power and high reliability
- ②. Large stroke
- ③. High strength fabricated structure
- ④. Inspect the load of the pressure sensor of the crusher to ensure the continuous feeding
- ⑤. Hydraulic-controlled discharge port
- ⑥. It is easily maintained and the jaw plate can be replaced rapidly
- ⑦. High wear-proof jaw plate

## 4 Deflecting plate of steel bar and main conveyor

- ①. Belt for prevention from impact and steel bar puncture
- ②. It can be folded during transportation
- ③. Tear resistance belt
- ④. The high strength scraper is installed at the head drum
- ⑤. Water-spraying and dust removal device

## 5 Chassis

- ①. Convenient for maintenance and cleaning
- ②. Solid framework of full-welded beam column
- ③. Have even weight distribution so as to ensure the excellent operation performance

## 6 Power

- ①. Strong power, lower noise and oil consumption
- ②. Easy maintenance and cleaning
- ③. Caterpillar diesel engine

## 7 Electric control system

- ①. It is equipped with double-layer cabinet body, vibration isolation and overpressure system as well as the function of dust prevention and moisture resistant
- ②. Touch screen that is simple, logical and easy to be operated

## 9 Iron separator (optional parts)

- ①. Iron separator with high sorting capacity

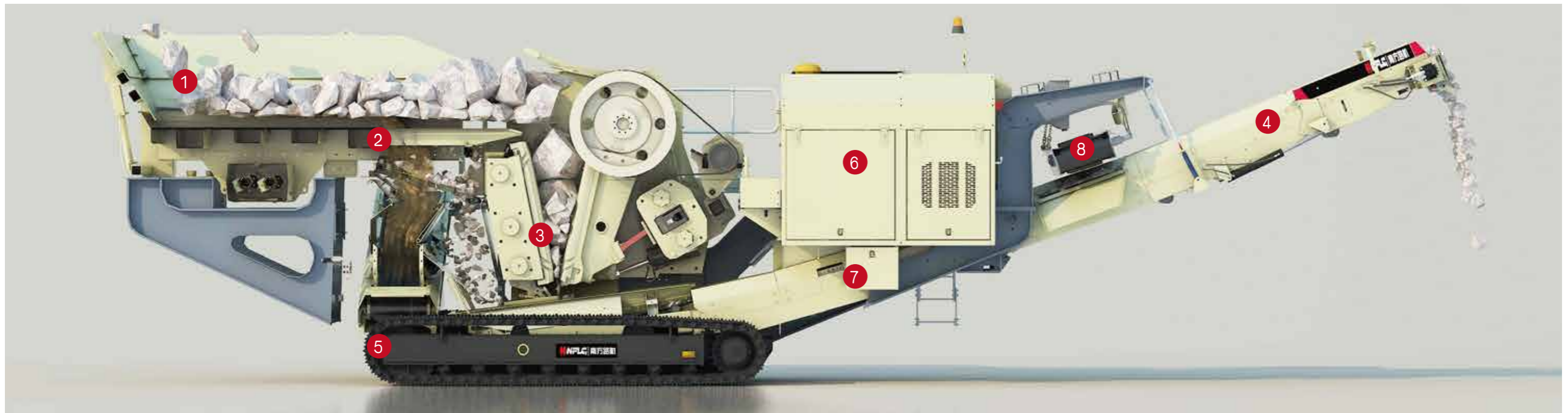
## 8 Track

- ①. Solid and durable crawler chassis
- ②. Able to work under the harsh environment
- ③. Locked by bolts, the track has two-speed adjustment and "flexible start" (only NFJ1175)

## 10 Side conveyor (optional parts)

- ①. It is equipped with PU scraper for removing the sludge

# Standard Equipment



## 1. Receiving hopper

- ①. Wear-proof steel hopper
- ②. Hydraulic foldable receiving hopper

## 2. Feeder with grid

- ①. Double-layer independent vibrating feeder
- ②. Top layer: Grid screen Lower layer: Mesh screen or rubber plate
- ③. Possible process scheme (optional)
  - a. Place all feedstocks into the crusher
  - b. The coarse material will enter the crusher and the fine material will enter the by-pass device
  - c. The coarse material will enter the crusher and the medium-sized material will enter the by-pass device, and the fine material will be stacked
  - d. The coarse material will enter the crusher and the medium-sized and fine materials will be stacked
- ④. Regulate the driving frequency automatically as per crusher load

## 3. Jaw crusher

- ①. Single-toggle jaw crusher
- ②. Spindle with large diameter made of alloy steel
- ③. Inspect the load of the crusher pressure sensor
- ④. High wear-proof jaw plate
- ⑤. Driven by hydrostatic pressure, the crusher will realize the positive and negative rotation
- ⑥. Standard S type lining plate in tooth form
- ⑦. Standard toggle plate

## 4. Main conveyor

- ①. Drive drum with high strength scraper
- ②. Tear resistance belt
- ③. Level sensor

## 5. Track

- ①. Sturdy heavy frame
- ②. Quality movable assemblies

## 6. Power device

- ①. Caterpillar diesel engine
- ②. Hydrostatic drive

## 7. Electric control system

- ①. PLC control
- ②. Vibration isolation installation of electric control cabinet
- ③. Protection of double-layer cabinet body and overpressure system
- ④. Menu-oriented visual touch screen text display
- ⑤. All crushing functions can be operated through the screen

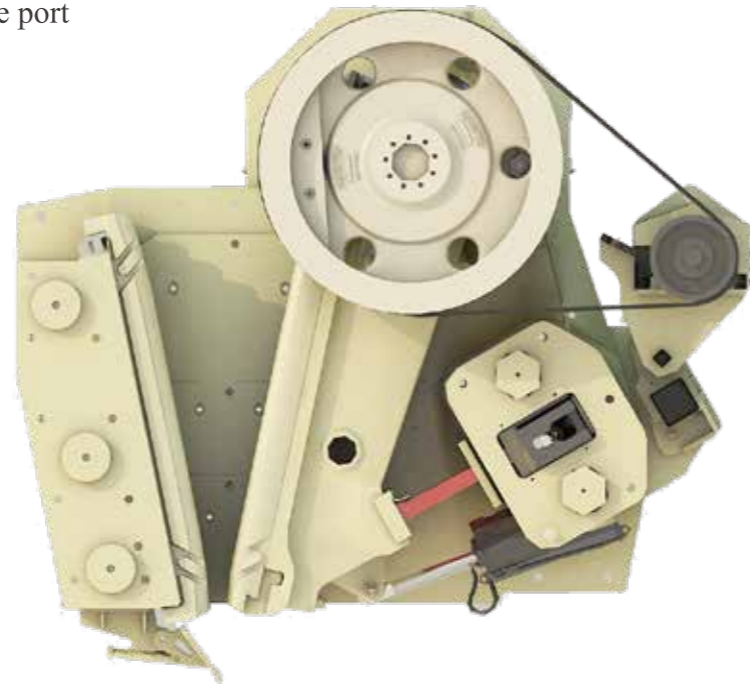
★ The notice will not be sent additionally in case of changes in all specifications parameters.

★ Optional accessories: Side belt conveyor, iron remover, water pump and lining plate can be selected as per different application conditions.

# Advantage

## Size of full hydraulic-regulated discharge port

- The discharge port of crusher realizes stepless adjustment within the setting range through the hydraulic-driven wedge system and tensioning rod spring
- Press the button on the PLC panel to realize the simple and safe adjustment
- Closed CSS adjustable hydraulic cylinder reduces the harsh working conditions and accidental damage rate of the hydraulic cylinder

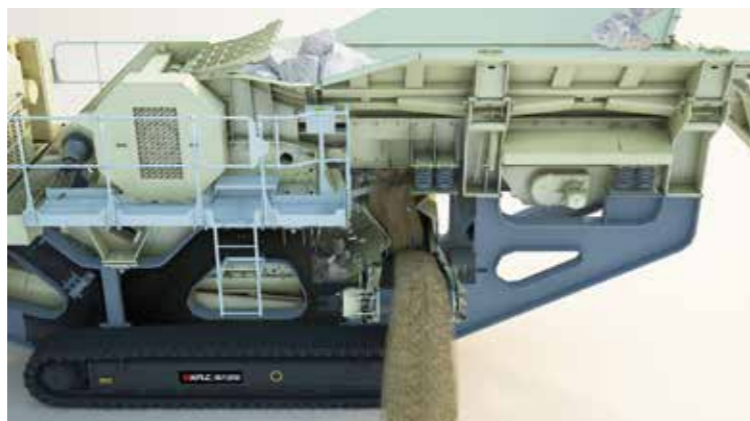


## Continuous feeding system

- The feeding speed of vibrating grate feeder with grid will be changed continuously according to the crushing pressure of the crusher, so as to avoid the material lacking or shutdown, and keep the continuous and even feeding as well as ensure the maximum output of equipment.

## Feeder with grid

- The fine materials that do not need to be crushed are discharged from the side belt conveyor for further processing



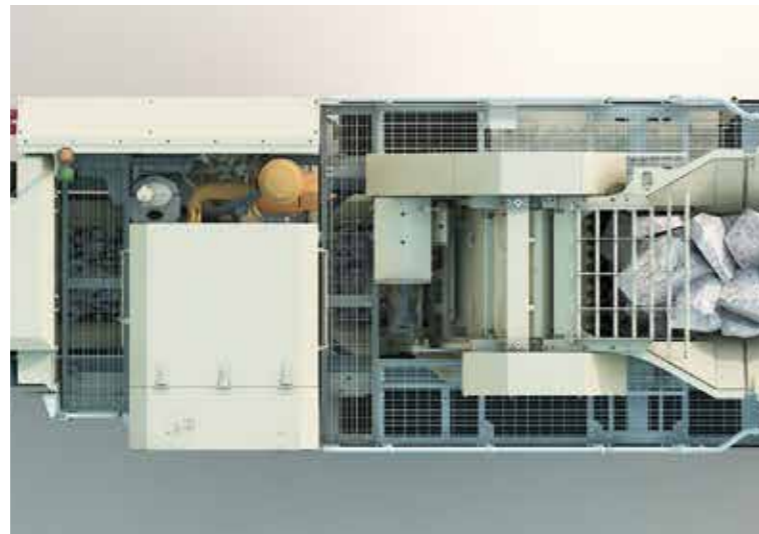
## Hydrostatic drive

- High reliability
- High transmission frequency
- It can be rotated positively and negatively and the obstruction can be removed

# Advantage

## Easy to maintain

- Allow full operation from a second location around the crusher, it also provides handrails, toe guard and access ladders with comprehensive access maintenance



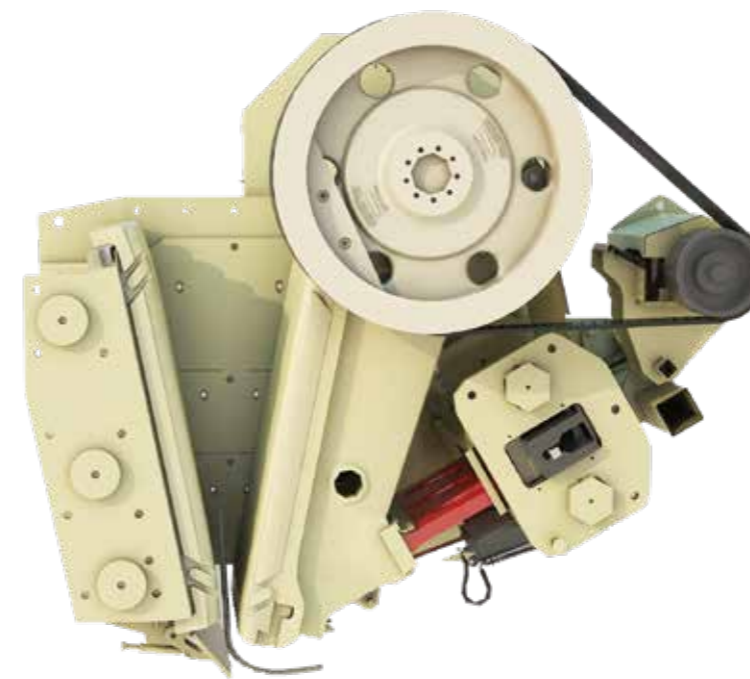
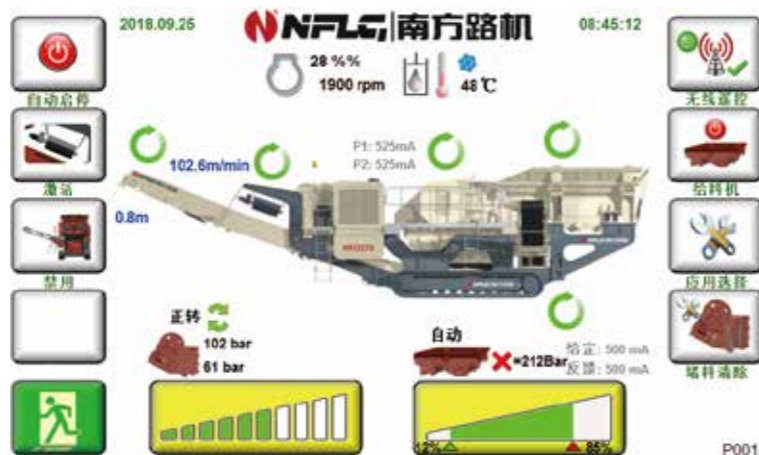
## Device of iron separator

- The iron remover for primary crusher can better protect the following machine



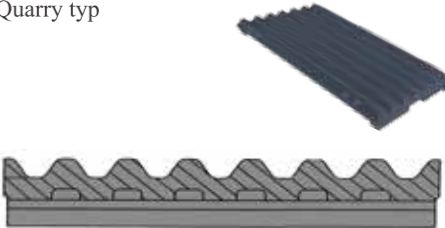
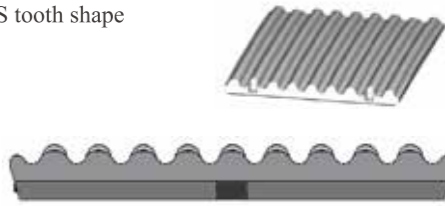
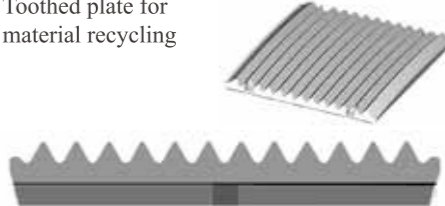
## Visual touch screen with images and texts

- Humanized interface with one-key start and stop functions and simple operation
- The parameter setting with high flexibility so as to meet the demands of different applications
- Monitoring the engine information in real time, conducive to the field maintenance and diagnosis
- All crushing functions can be operated through the screen



## Anti-deflection device

- The anti-deflection plate changes the direction of steel bar to prevent direct piercing of the belt

<p>It is applicable for crushing the rocks and pebbles. With longer abrasion life, good balance of crushing stress and working power. For the materials with strong abrasability and high hardness, it shall have long abrasion life. With moderate output.</p>	<p>Quarry typ</p> 
<p>It is applicable for rocks, pebbles and some recycling applications. It has a large contact area, so that the materials can be "caught" better and the output capacity can be further improved. It is not applicable for materials with high abrasability.</p>	<p>S tooth shape</p> 
<p>It is applicable for the application of wastes and recycled materials that are at the smaller discharge port . There is a better grasping function on the concrete with smooth surface. It is not applicable for the materials with strong abrasability or high hardness.</p>	<p>Toothed plate for material recycling</p> 

## Tracked oil-electric hybrid crushing equipment-developed exclusively

Save energy consumption

Applicable at the high altitude

High yield

The energy consumption of electric driving is reduced greatly comparing with that of diesel engine drive

Reduce the equipment maintenance cost



NFJ1480E



NFJ1175E

Main parameters of tracked mobile jaw crusher

Model	NFJ1060	NFJ1175	NFJ1280	NFJ1480	NFJ1175E	NFJ1480E
						
Host model	JW1060	JW1175	JW1280	JW1480	JW1175	JW1480
Drive mode	Hydrostatic driving	Hydrostatic driving	Hydrostatic driving	Hydrostatic driving	Electric motor with frequency converter	Electric motor with frequency converter
Feed inlet size (mm)	1000×660	1070×762	1200×800	1400×820	1070×760	1400×820
Maximum feeding size (mm)	550	650	680	700	650	700
Rotation speed (rpm)	220-290	220-290	225-260	225-265	230-280	225-260
CSS range (standard, mm)	40-140 (515 toggle plate)	75-145 (590 toggle plate)	75-200 (590 toggle plate)	100-225 (590 toggle plate)	75-145	100-225
Model/Power (kW)	Cat C9/224	Cat C9/261	Cat C9.3B/310	Cat C13/328	Perkins1104/74.5	Cummins QSB6.7/129
Rotation speed (rpm)	2000	1900	1800	1800	2200	2200
Pre-screening configuration	Integrated pre-screening	Integrated pre-screening	Integrated pre-screening	Independent pre-screening	Integrated pre-screening	Independent pre-screening
Volume (m <sup>3</sup> )	5	9	9	10	9	10
Optional expanded capacity (m <sup>3</sup> )	8	N/A	12	12	N/A	12
Total power consumption (kW)	N/A	N/A	N/A	N/A	160	280
Finished product dimension (mm)	0-270	0-250	0-360	0-380	0-280	0-380
Maximum throughput (m <sup>3</sup> /h)	350	475	600	750	475	750
Weight (t) (excluding side belt and iron separator)	34.74	51.3	65.0	75.2	50	81
Transport dimension (m)	14.1×2.6×3.4	14.5×2.9×3.5	15.6×3.0×3.8	18.0×3.5×3.8	14.5×2.9×3.5	18.0×3.4×3.8

# NFJ1280

## Release of new products

The integrated two-stage grate feeder has good desilting effect

It has the video monitoring function to monitor the feedstocks and their crushing conditions to reduce the occurrence of material blockage

Energy efficiency can be obtained after application of PVG system

Driven by hydrostatic pressure, the crusher has the function of cleaning up blocked materials

The crusher realizes the centralization lubrication and saving maintenance time





# NFJ1480

The best choice for large mines

Tracked mobile jaw crushing aircraft carrier equipment



# Industrial Services



Cloud worry-free system



24-hour customer service system



National service outlets



Team of technical experts

On-site machine delivery and service training

Ensure that customers are in control of routine maintenance

Regular customer visits at site

On-site service, quick response

Ensure the shortest troubleshooting time

Supply of components and parts supply from stock