



Oil-Flooded Rotary Screw Compressed Air Systems

185-375 kW (250-500 hp)



Your Trusted Partner in Compressed Air

Staying ahead of your competition with advanced compressed air systems and services that boost productivity, lower operating expenses and extend equipment life is critical to your success.

No matter the industry or application, you can count on Ingersoll Rand® as a trusted partner for oil-flooded compressed air technologies and services. By focusing on you and your business, we provide collaborative solutions that make you successful, offering a total system approach to maximize efficiency and performance.

Take a Systems Approach

Delivering reliable compressed air to your facility goes well beyond the compressor itself. Optimize total cost of ownership (TCO) through a systems approach that employs the best air compression technologies to deliver reliability for life—from design to decommissioning.

Your business will benefit from Ingersoll Rand's partnership through our extensive experience and global expertise to ensure reliability, lower maintenance costs, ease of serviceability and system optimization.



Let's Get Started Together

Throughout the entire lifecycle, our systems approach helps you achieve the lowest operating cost.





Why Choose a World-Class Rotary Screw Compressed Air System?

You need a reliable, cost-effective solution with industry-leading energy efficiency, all backed by a global network of experts. That's what you get with our Next Generation R-Series oil-flooded rotary screw air compressors.

For efficiency and air flow

Advanced airend and drive component design provide world-class specific power and best-in-class air flow, resulting in reduced energy use.

For reliability

Every component in our oil-flooded compressor system supports maximum reliability for increased productivity, longer equipment life, lower operating costs and higher profitability.

For virtually any environment

Our oil-flooded compressors have flexible standard and optional design features that allow operation both indoors and outdoors at extreme ambient temperatures ranging from -10°C to 55°C, as well as harsh environments.

For lower cost of ownership

Intuitive microprocessor controls, easy serviceability and long-life consumables significantly reduce operating, maintenance and service costs over the lifetime of your compressed air system.



Customized Products for Your Application

Ingersoll Rand offers a wide portfolio of reliable products that will adapt to your industry and application. We will assess and propose the best solution to lower the total cost of ownership of your compressed air system, maximizing the productivity of your operation.



Utilities

Instrument air, pneumatic valves, control cylinders, fuel purging, service air, fuel atomization, air motors



Metal Working

The power source to keep production moving quickly and on time



Mining

Reliable power for equipment and ventilation, on the surface or below ground



Manufacturing & Assembly

High-quality air for your facility, from start to finish



Manufacturing

Proven design to meet demanding manufacturing environments



Glass

Low and high pressure systems for furnaces, packaging, palletizing and shipping

AIR COMPRESSORS

OIL-FLOODED COMPRESSORS

Air compressor use accounts for a significant part of your energy costs. Our design team used advanced computer modeling techniques to create rotary screw compressors that maximize efficiency and airflow, while operating reliably to improve your company's bottom line.



RS250IE COMPRESSOR

All Air Isn't Equal

Next Generation R-Series air compressors eliminate waste and control costs effortlessly to lower total cost of ownership.

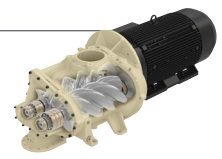


How it Works
See the R-Series Video and Product Tour

What Makes Our Rotary Screw Compressors Unique?

Optimized Drive Components

World-class single and two-stage airends, along with fixed or variable speed induction motors minimize energy use.



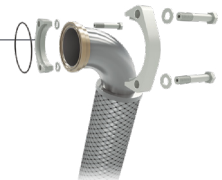
Flexible Design Options

Air-cooled and water-cooled configurations, extreme ambient temperature options, high dust filtration and outdoor modifications for harsh environments to best match your application.



Leak-free Designs

V-Shield™ technology provides a totally integrated, leak-free design, featuring PTFE stainless steel braided oil hoses and O-ring face seals.



Intuitive Control

Xe-Series controllers deliver increased control and functionality through an intuitive user interface as well as remote access with any common, current web browser.



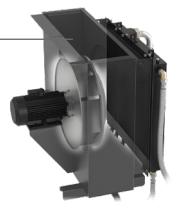
Adaptive Monitoring

Progressive Adaptive Control (PAC™) monitors key operating parameters and continuously adapts to prevent unexpected downtime.



Advanced Cooling Systems

A free-floating cooling system allows heat exchangers to expand and contract, reducing thermal stress for improved system durability.



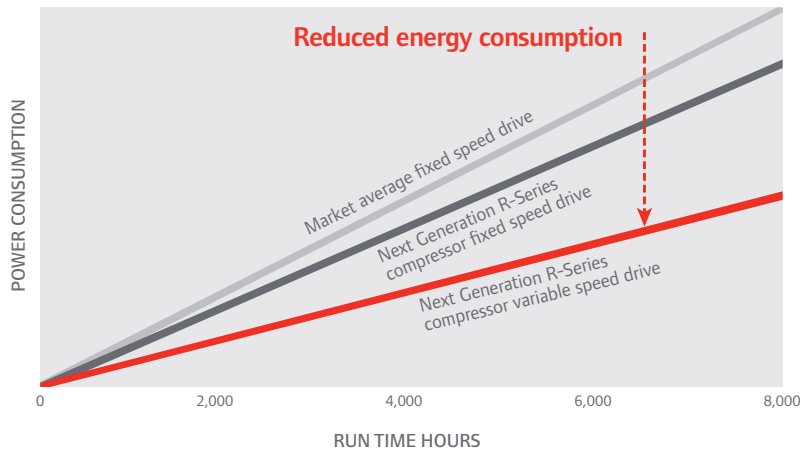
Next Generation Rotary Screw Air Compressors, 200-355 kW (250-500 hp)

World-Class Efficiency

Our Next Generation R-Series compressor includes an all-new, state-of-the-art airend, making it your best choice for performance. The new airend improves efficiency through several advancements, including an optimised rotor profile to help minimise operating expenses.

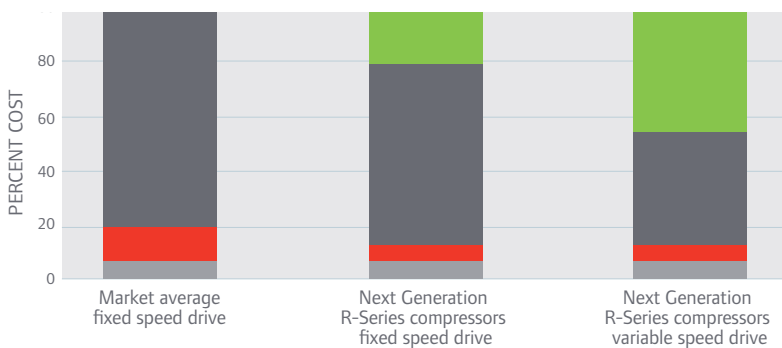
The new rotor profile also provides world-class airflow. With more airflow for the same power input, your compressor requirements are smaller, reducing both investment costs and energy usage.

Improve performance even more with our optional two-stage airend for increased flow capacity and efficiency gains.



Driving Toward Next Generation Efficiency

Every Next Generation R-Series compressor features an advanced airend and IE3-rated/ NEMA Premium® motor that reduces total cost of ownership.



Lower Your Total Cost of Ownership

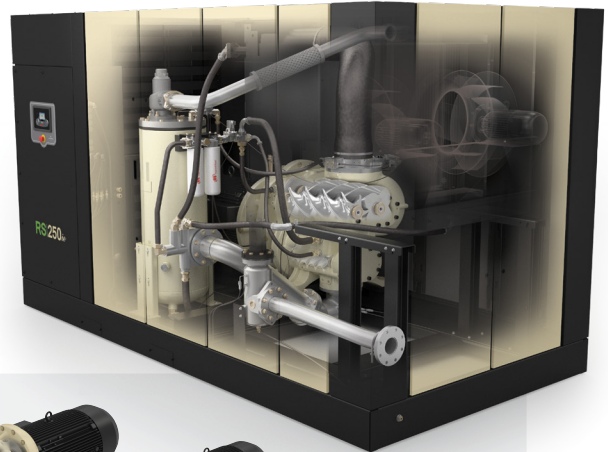
With improved efficiency and more airflow, our Next Generation R-Series compressors significantly reduce energy use, lowering your lifecycle cost.

Xe-145M Series Compressor Controller 10-YEAR LIFECYCLE COST

■ Savings
 ■ Energy
 ■ Maintenance
 ■ Installation

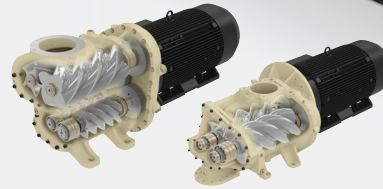
Innovative Design, Flexible Choices

Our rotary screw compressor systems provide flexible equipment choices, as well as advanced solutions that ensure reliable flow—even in extreme operating environments. That’s what you expect from Ingersoll Rand. That’s what you get from the Next Generation R-Series air compressor.



Optimise Your Demand

Choose from optimized airends and drives to achieve the exact level of performance and economy your operation and budget require.



- i** **Efficiency for Constant Demand:** Fixed speed compressors featuring the reliable and efficient IE3 TEFC induction motor
- n** **Efficiency for Variable Demand:** VSD compressors with the highest efficiency motor available
- ie** **Premium Efficiency for Constant Demand:** Fixed speed compressors with the continuous duty IE3 TEFC induction motor and enhanced features for improved performance and efficiency
- ne** **Premium Efficiency for Variable Demand:** VSD compressors with enhanced features for improved performance and efficiency

Built to Work in Virtually Any Environment

Next Generation R-Series compressors feature an advanced motor design built to operate at extreme ambient temperatures. A variety of options are available to operate reliably in harsh conditions.

Extreme Environment Options	<i>i</i>	<i>ie</i>	<i>n</i>	<i>ne</i>
▶ Outdoor modification/rain protection	•	•		
▶ Low ambient temperature protection to -23°C	•	•		
▶ High ambient rating up to 55°C	•	•		
▶ Premium high dust filtration	•	•		
▶ Harsh water cooling system (water-cooled only)	•	•	•	•
▶ Seawater cooling system (water-cooled only)	•	•	•	•

Next Generation R-Series – 50 and 60 Hz Performance

Model	Nominal power kW (hp)	Max pressure barg (psig)	Capacity (FAD) m ³ /min (cfm)
RS185i-260i fixed speed	185-260 (250-350)	7.5-10.0 (110-145)	34.3-48.2 (1,211-1,702)
RS185ie-375ie fixed speed premium	185-375 (250-500)	7.5-14.0 (110-200)	30.1-70.5 (1,063-2,488)
RS200n-250n variable speed	200-250 (268-335)	7.0-10.0 (100-145)	16.8-49.6 (593-1,752)
RS200ne-355ne variable speed premium	200-355 (268-475)	7.0-10.0 (100-145)	18.3-70.5 (646-2,490)