



Tool trolley

TTS 93/6 A

Art.No. 81200154
GTIN 4018754327508
Model 93/6 A

Label. Tool trolley TTS 93/6 A 6 Drawers 481 x 877 x 1000 mm Anthracite, RAL 7016

Description.

Two-stage safety concept:

1. Central locking through cylinder lock with hinged key
 2. Topple proof – it is not possible to pull out several drawers at the same time
- 2 handles
 - All-round impact protection
 - Durable plastic tray made of ABS with compartments for small parts
 - Oil- and acid-resistant smooth-running wheels (D.125 mm) with thread guards to protect the bearings from dirt and threads, with two locking brakes
 - Hole pattern on both sides for hooks No. 8031-8041, e.g. for larger tools
 - Can be fitted with STAHLWILLE standard and TCS inlays
 - 6 easily removable drawers (black, RAL 9005) with full extension (370 mm) and ball bearing cage guide
 - With paper roll holder
 - Can be fitted with STAHLWILLE TCS inserts (per drawer 1 x 3/3)

Advantages.

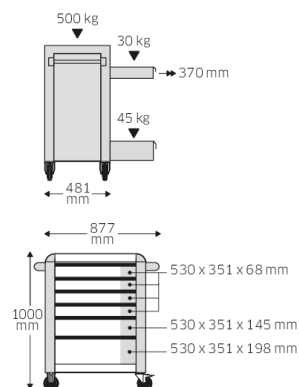
Two-stage safety concept: 1. Central lock by cylinder lock with folding key 2. Tilt protection – it is not possible to pull out several drawers at the same time

Oil- and acid-resistant lightweight wheels (125 mm) with thread guards protect the bearings from dirt and threads, with two parking brakes

2 handles, all-round impact protection and a hard-wearing plastic shelf made of ABS with practical compartments for small parts

Central locking by cylinder lock with folding key, the anti-tilt device prevents several drawers from being pulled out at the same time

Technical Drawing.



Technical Attributes.

| | |
|----------------------------|--|
| Number of drawers | 6 |
| Breite mm (b) | 877 mm |
| Colour | Anthracite, RAL 7016 |
| Colour (short form) | RAL 7016 |
| Height mm (h) | 1000 mm |
| Länge mm (l) | 481 mm |
| No. | 93/6 A |
| Drawer internal dimensions | 530 x 351 x 68 mm (4x) 530 x 351 x 145 mm (1x) 530 x 351 x 198 mm (1x) |
| Drawer load capacity | 30 kg 30 kg 45 kg |
| Load capacity | 500 kg |

Logistics data.

| | |
|--|------------------------|
| Length (IFS) | 750 |
| Width (IFS) | 480 |
| Height (IFS) | 840 |
| Length (packed, mm) | 825 |
| Width (packed, mm) | 562 |
| Höhe (verpackt, mm) | 910 |
| Code | 81200154 |
| Weight (gross, kg) | 64,000 |
| Weight PAP (kg) | 3,000 |
| Weight PVC (kg) | 0,000 |
| GTIN | 4018754327508 |
| Numbers of content units per order units | 1 |
| Country of origin | CHINA |
| Region of origin | Ausländischer Ursprung |
| Customs tariff no. | 94032080 |

Varianten.

| Code | Article number (ERP) | Article description (Autom._) | GTIN |
|----------|----------------------|--|---------------|
| 81200154 | 93/6 A | Tool trolley TTS 93/6 A 6 Drawers 481 x 877 x 1000 mm Anthracite, RAL 7016 | 4018754327508 |
| 81200155 | 93/6 R | Tool trolley TTS 93/6 R 6 Drawers 481 x 877 x 1000 mm Red, RAL 3020 | 4018754333080 |
| 81200156 | 93/6 B | Tool trolley TTS 93/6 B 6 Drawers 481 x 877 x 1000 mm Blue, RAL 2703035 | 4018754333097 |

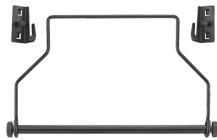
GTIN-Code.



Accessories.



90432727
Spray can holder



81483004
Paper roll holder



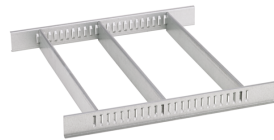
89010040
Cable holder



83812070
Empty tray for small
components



81484001
Drawer separator



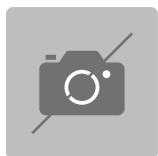
81484002
Drawer dividers



89010003
Non-slip mat GRIPMAT



81200157
Toolbox



89010042

Spare parts.



90432658
Handle



90432644
Handle



81490001
Set of wheels

Images.



STAHLWILLE Eduard Wille GmbH & Co. KG

Lindenallee 27 · 42349 Wuppertal · Germany · Phone: +49 202 4791-0 · Fax: +49 202 4791-200
info@stahlwille.de · www.stahlwille.de · Copyright by STAHLWILLE Eduard Wille GmbH & Co. KG, Wuppertal
Copyright by STAHLWILLE Eduard Wille GmbH & Co. KG, Wuppertal