



Mobile workbench WB 621

WB 621

Art.No. 85010621
GTIN 4018754336241
Model WB 621

Label.

Mobile workbench WB 621 7 Drawers Anthracite, RAL 7016 L.1150mm x W.500mm x H.890mm

Description.

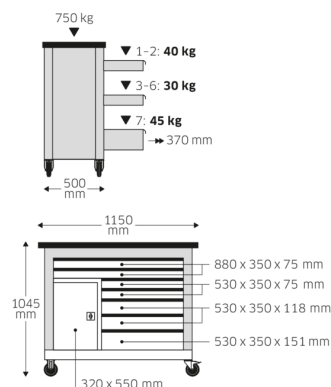
Three-stage safety concept:

1. Central locking with a lateral cylinder lock and hinged key
 2. Individual locks prevent inadvertent opening while in transit
 3. Topple proof – it is not possible to pull out several drawers at the same time
- 7 drawers
 - Large work surface with birch multiplex worktop, FSC certified, 1150x 500x30 mm
 - Separate lockable cabinet with magnetic bracket and adjustable shelves (70mm grid)
 - Drawers and cabinet section close at the same time
 - Stainless steel trim
 - Cabling is possible through two rubberised feed throughs and a removable cable channel on the back
 - Oil- and acid-resistant wheels (125 mm diameter) with thread guards to protect the bearings from dirt and threads, with two locking brakes
 - Frame RAL 7016, drawers and cabinet RAL 9005, in durable industrial powder coating
 - Paper roll holder
 - Hole pattern on the side for hooks No. 8031-8041, e.g., for larger tools
 - Can be fitted with STAHLWILLE standard and TCS inserts, drawer 1+2; 1 x 3/3 + 1 x 2/3 drawer 3-7; 1 x 3/3
 - Optionally available e-kit consisting of a magnetic multi-plug with two USB ports, a magnetic holder (for variable attachment to any part of the workbench), and a cable holder

Advantages.

Three-stage safety concept: 1. Central locking by side cylinder lock with folding key 2. Individual locks prevent inadvertent opening while in transit 3. Tilt protection – it is not possible to pull out several drawers at the same time

Technical Drawing.



Technical Attributes.

Number of drawers	7
Breite mm (b)	500 mm
Colour	Anthracite, RAL 7016
Height mm (h)	890 mm
Länge mm (l)	1150 mm
Drawer internal dimensions	880 x 350 x 75 mm (2x) 530 x 350 x 75 mm (2x) 530 x 350 x 118 mm (2x) 530 x 350 x 151 mm
Drawer load capacity	40 kg 30 kg 30 kg 45 kg
Load capacity	750 kg

Logistics data.

Length (IFS)	1150
Width (IFS)	500
Height (IFS)	890
Length (packed, mm)	1160
Width (packed, mm)	550
Höhe (verpackt, mm)	930
Code	85010621
Weight (gross, kg)	115,000
Weight PAP (kg)	7,500
Weight PVC (kg)	0,000
GTIN	4018754336241
Numbers of content units per order units	1
Country of origin	CHINA
Region of origin	Ausländischer Ursprung
Customs tariff no.	94032080

Varianten.

Code	Article number (ERP)	Article description (Autom._)	GTIN
85010621	WB 621	Mobile workbench WB 621 7 Drawers Anthracite, RAL 7016 L.1150mm x W.500mm x H.890mm	4018754336241

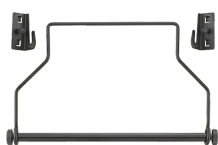
GTIN-Code.



Accessories.



90432727
Spray can holder



81483004
Paper roll holder



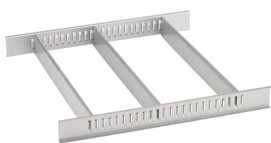
89010040
Cable holder



83812070
Empty tray for small components



81484001
Drawer separator



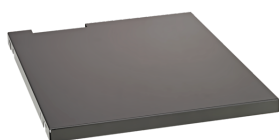
81484002
Drawer dividers



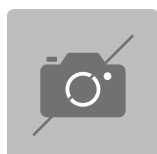
89010003
Non-slip mat GRIPMAT



90432728
Electronic kit

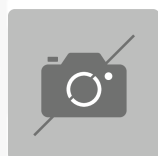


90432736
Shelf



89010041

Spare parts.



90432731
Multiplex beech wood top



81490001
Set of wheels

Images.



STAHLWILLE Eduard Wille GmbH & Co. KG

Lindenallee 27 · 42349 Wuppertal · Germany · Phone: +49 202 4791-0 · Fax: +49 202 4791-200
info@stahlwille.de · www.stahlwille.de · Copyright by STAHLWILLE Eduard Wille GmbH & Co. KG, Wuppertal
Copyright by STAHLWILLE Eduard Wille GmbH & Co. KG, Wuppertal