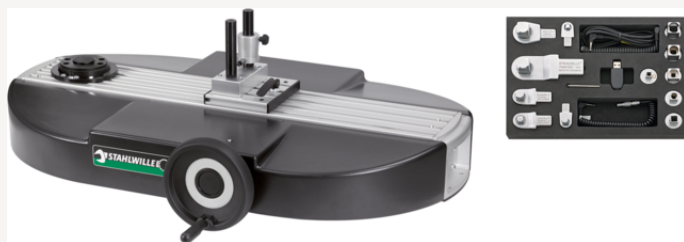


## Complete calibration system



Art.No. **96521076**  
 GTIN **4018754214655**  
 Model **7794-1/400**

### Label.

Complete calibration system Values only for in-lb1-400Nm f.transducer

### Description.

- The electronic perfectControl calibration device with manual drive significantly reduces the effort and time required for calibrations and adjustments of torque wrenches.
- Measurement without shifting the point of application of force
- avoidance of incorrect measurements with the help of the precisely mounted spindle and the ergonomically shaped handwheel
- extremely precise calibration through optimisation of the bearing and the square receptacles of the transducers
- Quick and easy change of transducers due to QuickRelease locking mechanism
- Convenient key operation for clockwise and anticlockwise measurements with automatic speed adjustment
- Time-saving by fixing the bridge support with an eccentric clamp that can be operated with one hand
- transfer of measured values via USB interface to a PC for further processing and archiving
- a calibration certificate can be printed out after calibration or saved as a PDF file
- input and output calibrations can be documented
- DIN EN ISO 6789 is supported in numerous languages during calibration. Other standards and factory specifications on request
- Can be upgraded to perfectControl calibration device no. 7794-3 for angle wrenches
- calibrations up to 1000 N-m with the help of the easy-to-mount extension no. 7791-1
- registered design, patents pending
- triggering and measuring torque spanners can be calibrated
- Calibration of transducers with the aid of torque reference spanners No. 7770-100 and 7770-1000 possible on request
- Included in delivery:
  - 3 transducers
  - 6 calibration square insertion tools No. 734K (sizes 4, 5, 12, 20, 40, 100)
  - 6 square adapters (No. 409M, No. 7787, No. 7788, No. 7789, No. 7789-4, No. 7789-5)
  - 1 USB adapter No. 7757-1

- 1 Torkmaster software no. 7731-1
- 1 jack plug cable No. 7751
- 1 spiral cable no. 775
- 1 spiral cable no. 7751-2 with jack plug and precision plug connector with self-locking mechanism
- 1 cold appliance cable set
- 1 offset screwdriver No. 10760CV SW 2 mm
- delivery without torque spanner and laptop

## Advantages.

The electronic perfectControl calibration device with manual drive significantly reduces the effort and time required for calibrations and adjustments of torque wrenches

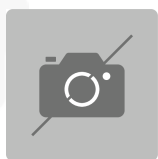
## Technical Attributes.

Range N·m	1-400 N·m
Breite mm (b)	800 mm
Height mm (h)	950 mm
Länge mm (l)	1200 mm

## Logistics data.

Length (IFS)	1200
Width (IFS)	800
Height (IFS)	950
Length (packed, mm)	1200
Width (packed, mm)	800
Höhe (verpackt, mm)	950
Code	96521076
Weight	60100 g
Weight (gross, kg)	57,200
Weight PAP (kg)	0,000
Weight PVC (kg)	0,000
GTIN	4018754214655
Numbers of content units per order units	1
Country of origin	GERMANY
Region of origin	Nordrhein-Westfalen
Customs tariff no.	90318080

## Parts list.



52110058



11030010  
Adaptor



43150002  
Hexagon key wrench



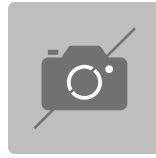
52110054  
Cable for No.7728



52110052  
Spiral cable



81500003  
Plastic case, empty



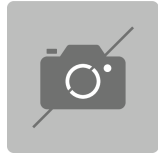
83071030  
Inlay for plastic case



52110051  
Jack cable



52111057  
USB adaptor



91100521  
Packaging material

## Varianten.

Code	Article number (ERP)	Article description (Autom._)	GTIN
96521076	7794-1/400	Complete calibration system Values only for in-lb1-400Nm f.transducer	4018754214655
96521077	7794-1/1000	Complete calibration system Values only for in-lb1-1000Nm f.transducer	4018754214662
96521078	7794-2/400	Complete calibration system Values only for in-lb1-400Nm f.transducer	4018754214679
96521079	7794-2/1000	Calibration system, complete Values only for in-lb1-1000Nm f.transducer	4018754214686

## GTIN-Code.



4 018754 214655

